



STANDARD CONSTRUCTION DETAILS AND SPECIFICATIONS

TIM STIEVE, P.E., ENV-SP TOWN & COUNTRY ENGINEERING, INC.

Purpose of Discussion

- ▶ Why standardize detail drawings and specifications?
- ▶ Discuss procedure to confirm/update current standards

Why standardized detail drawings and specifications

- ▶ Make decisions prior to construction
- ▶ Efficiency in design and plan preparation
- ▶ Limit contractor/inspector questions during construction, ensuring the final product meets the client's expectations

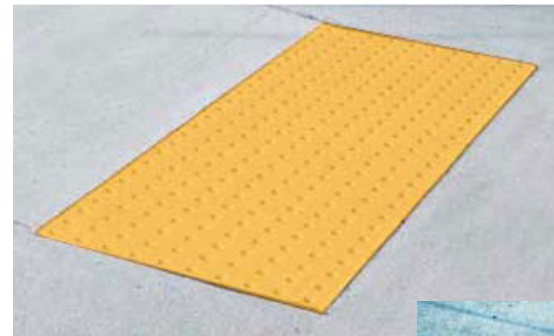
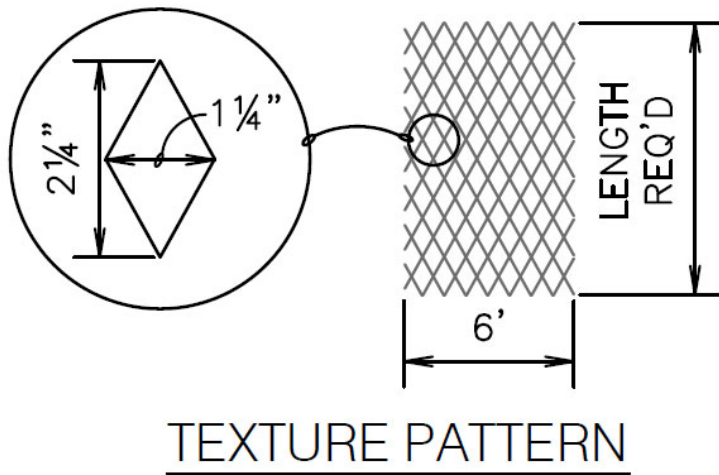
Procedure to confirm/update current standards

▶ Questionnaire



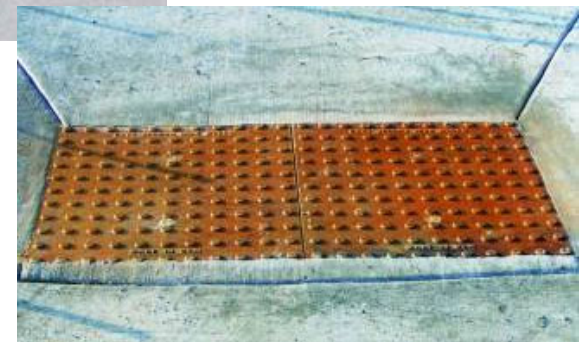
▶ Client review of detail drawings and specifications

Curb Ramps – Diamond Pattern or Detectable Warning Plates

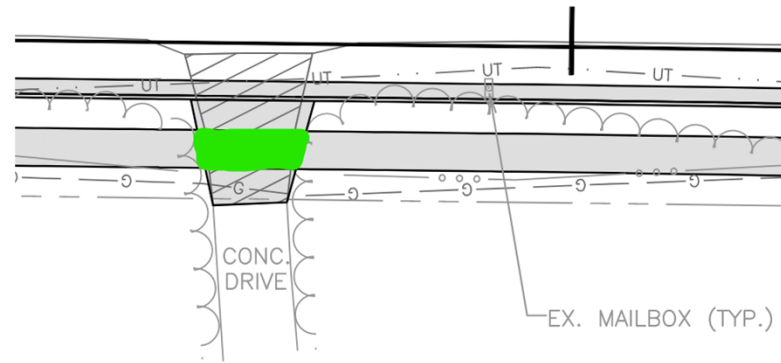


**Bright
Yellow**

**Natural
Patina**



Sidewalk Thickness in New Developments



LINE (TYP.)

#4805

Manhole Adjusting Rings- Preferences



Manhole Chimney Seals

External



Internal



Storm Sewer Materials

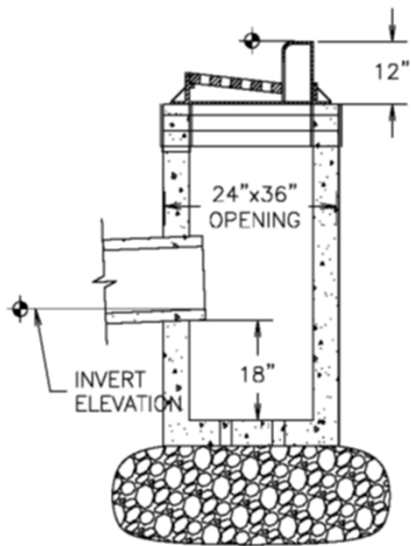
Reinforced Concrete Pipe



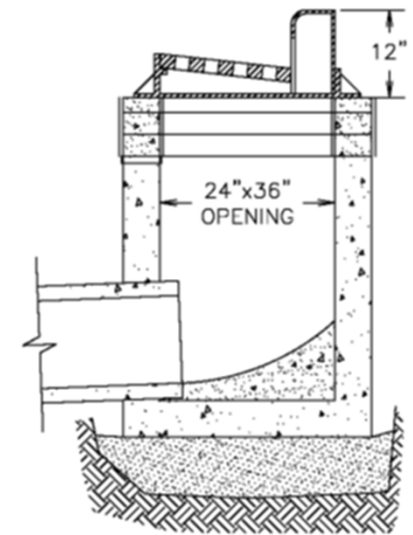
High Density Polyethylene



Storm Inlet Preferences



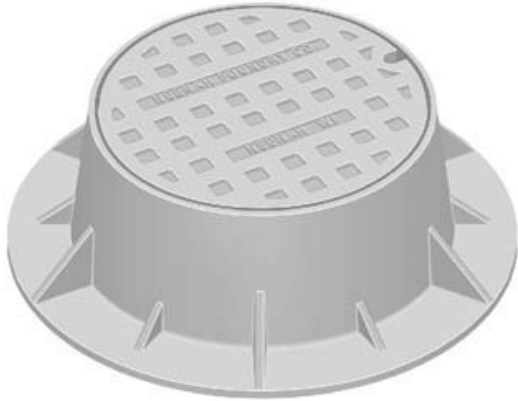
Catch Basin Inlet



Inlet

Standard Castings

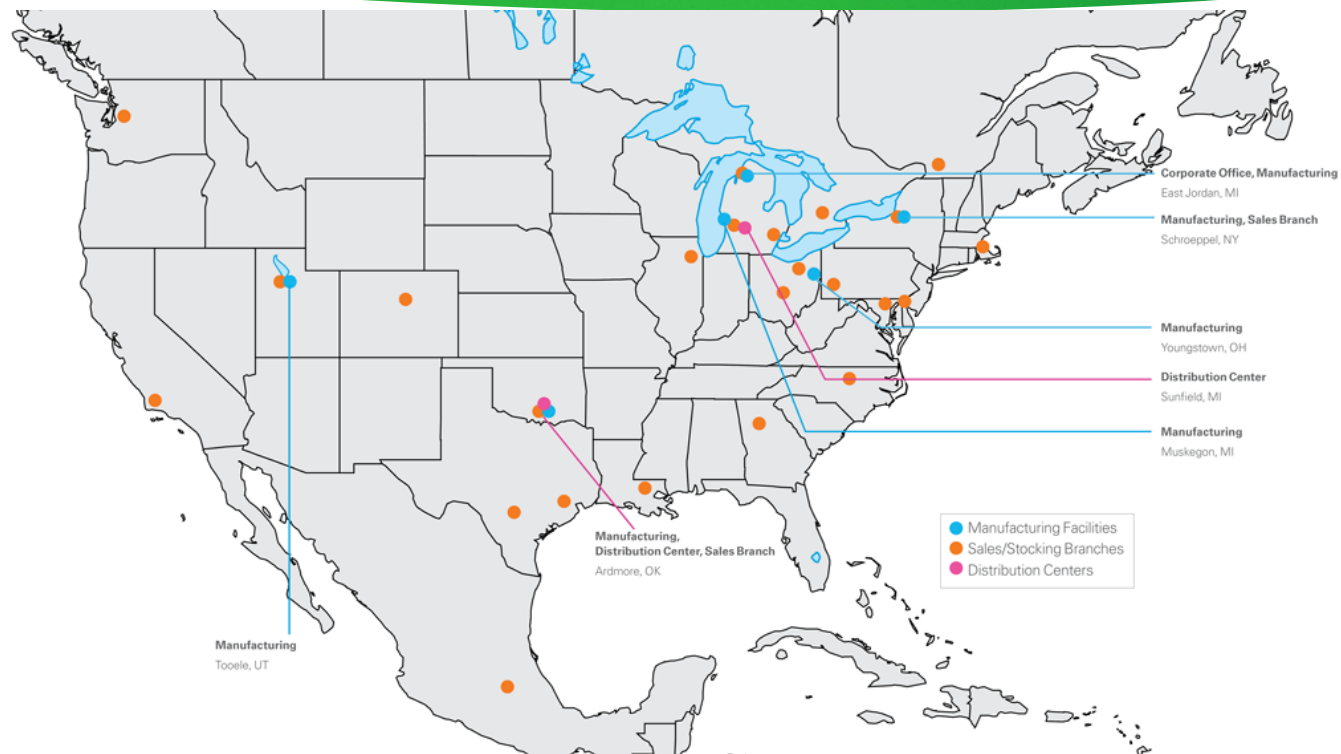
R-1550



R-3067

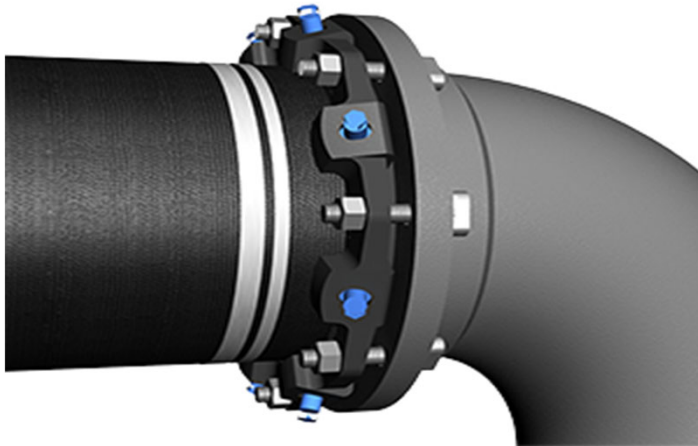


Standard Castings- East Jordan



Water Main Materials

Ductile Iron



HDPE



PVC



Water Valves and Hydrants



Mueller



Clow



American
Flow
Control



Mueller
Centurion



Waterous
Pacer



With or without
Storz Adaptors

Water Main Appurtenances

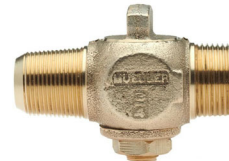
Valve Boxes



Valve Box Adaptors



Corporation Stops



Curb Stops



Curb Boxes



Recycled Aggregates

Recycled Concrete



Recycled Asphalt



Concrete Waste Management

A Better Solution for Construction Site Washout

Outpak Washout

- Concrete, Paint, Dry Wall Mud, Stucco, Mortar
- Easy to Transport, Setup and Dispose of
- Eco-Friendly and BMP Compliant

Construction Site Washouts and Other Spill Containment Solutions

- Corrugated Washouts**
Heavy-duty, water-treated Kraft fiberboard
Folds flat for easy transport and storage

Size	Capacity
30"x30"x14"	Capacity: 0.25 cu. yards/30 gallons
4'x3'x14"	Capacity: 0.68 cu. yards/140 gallons
6'x5'x11"	Capacity: 1.33 cu. yards/200 gallons

- All-Weather Washouts**
Woven poly propylene for the worst of climates
Includes 5 to 1 safe working load lifting straps

Size	Capacity
4'x3'x14" with Top	Capacity: 0.68 cu. yards/140 gallons
6'x5'x12" Bottom	Capacity: 1.33 cu. yards/200 gallons

- PVC Washouts**
For larger volume concrete pump & mixer trucks
For secondary containment of 55 gallon drums and generator equipment

Size	Capacity
6'x8'x12"	Capacity: 2.0 cu. yards/400 gallons
6'x10'x12"	Capacity: 3.0 cu. yards/600 gallons

outpak.com 208-376-6967 sales@outpak.com



Landscape Restoration

- ▶ Acceptance
 - ▶ 95% Germination
 - ▶ 1-3" Growth Height
- ▶ Retainage prior to acceptance



QUESTIONNAIRE



Contact Information

Name of person completing questionnaire:

Tim Sieve

Email:

City/Village/Town:

Are specification revisions needed?*

This is a required question.

Yes

No

Back

Next

Page 2 of 6

Powered by ArcGIS Survey123

Sanitary Sewer

Do you want all new sewers televised after installation, before acceptance?

Yes

No

What type of sanitary manhole casting do you prefer?

Neenah R-1550 (typical)

Other (specify)

What type of low profile sanitary manhole casting do you prefer?

Neenah R-1689

Other (specify)

Should chimney seals should be installed on manhole castings?

Yes

No

Not necessarily, decide on a case by case basis

Water Main

Do you want all ductile iron water main installed with polywrap for corrosion protection?

Yes

No

Do you want to use valve box adaptors for water valve installation?

Yes

No

At junctions in mains, water valves should be located:

As close to the junction as possible

At the street right-of-way line

Other (specify)

At hydrants, valves should be located:

At the tee on the main

Three feet from the hydrant

Other (specify)



ArcGIS Survey123

Smarter forms, smarter data collection